



ALPINE VT5000

Variable Temperature Glass Front Merchandiser

The Alpine VT5000 glass front food & beverage merchandiser provides the largest dispensing capability with the highest energy efficiency in the industry. Vend sodas, juices, milk, yogurts, and other foods best served cold from one versatile package.



Shown with silver ADA door, Automated Delivery Assist and kick panel options.

- Adjustable zone control
- ENERGY STAR® Rated
- Advanced styling & touch screen interface options
- Americans with Disabilities Act (ADA) ready
- Programable health safety by selection, range or row
- Unmatched beverage options
- Motor pairing capable
- Single & dual coil options
- Energy efficient LED lighting
- Steel snack tray option
- New self cleaning condenser coil with reverse on startup fan



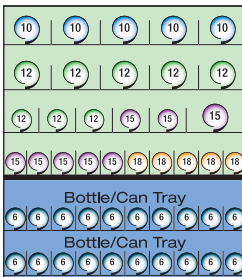
ALPINE VT5000

Variable Temperature Glass Front Merchandiser

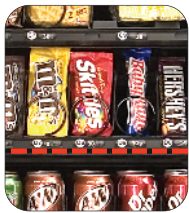


Shown with kick panel option.

Sample Configuration



Configure to meet your merchandising needs. Movable barrier tray allows you to adjust temperature zones.



Features

- **Optional touch screen interface**
 - Built-in, full color 7" LCD screen replaces traditional keypad & display
- **ENERGY STAR® Rated**
- **Attractive interface styling panel option**
- **Standard peripheral opening for additional payment or POS systems**
- **Standard lighted keypad with Braille identification**
- **MDB support for all industry standard devices including cash, coin, debit and credit systems**
- **DEX data output support**
- **Fully integrated controller with sales and accounting features:**
 - Price setting by selection, row or machine
 - Free vend and Combo vend modes
 - Flexible space to selection setting
 - Time of day discounting
 - Time of day shutdown modes for energy savings and controlled vend times
 - Programmable point of sale messages
 - Programmable coupon and token values
 - Coin and bill rejection rate counts
 - Accountability display by selection, row or machine
 - Talker device support for sight impaired (Talker not included)
- **Motor pairing capable**
- **Proven operating environment**
 - **High: 100°F (38°C) @ 90% RH**
- **Reverse on startup condenser fan**
- **2 year warranty - contact USI for complete details**

Energy Efficient

- Uses only 4.2 Kwh/day @ 75°F (24°C), 45% RH based on refrigerating 34.6 cu.ft. of space
- Low-E triple pane Argon filled door glass
- LED lighting
- Thickest foaming on the market with Eco-friendly zero ODP Ecomate® foaming process
- Balanced airflow design
- Energy saving programmable shutdown modes
- Eco-friendly refrigeration system

Adjustable Snack & Food Selections

Configurable to almost any package size in the field with no need for tools.
Full selection (5-3/4"W)
3/4 selection (4-5/16"W)
Single selection (2-7/8"W)



Optional Automatic Delivery Assist

Product is delivered at 15" via automated lift & door automatically opens for easy one handed retrieval.



Optional iCart Touch Screen Interface

Enhances consumer purchase experience. Communicates purchase information & messages to consumer.



Patented High Capacity Can Tray Option

Features live product display and holds up to 150-12oz. cans.



Versatile Steel Beverage Trays

Hold up to 60 canned or bottle beverages and come in 10 select or 9 select versions for wider product



| Alpine VT5000 | |
|--------------------------------|---|
| Selections | Up to 60 items |
| Capacity | Varies with tray configuration |
| Selection Pricing | Individual from \$0 to \$655.35 |
| Payment Systems | All Industry standard MDB compatible devices |
| Data Communication | DEX/UCS |
| Electrical Requirements | Domestic: 115 VAC/60Hz, 9.5 AMPS International: 230 VAC/50Hz, 4.8 AMPS; With Heated Glass: 115 VAC/60Hz, 10.5 AMPS International: 230 VAC/50Hz, 5.2 AMPS |
| Refrigeration | Super 1/3 HP, R134a Closed System |
| Dimensions | Height 72" (183 cm) Width 41" (104 cm) Depth 38" (97 cm) |
| Shipping Weight | *975 lbs. (442 kg) *Varies with tray configuration |
| Standard Features | GVC2 Controller, LED Lighting, iVend® Sensor System, Can & Bottle Trays, Heated Glass, Motor Pairing Capable |
| Options | Automatic Delivery Box, iCart Touch screen Interface, inDEX Tool, 6th Tray, 9 Select Can/Bottle Tray Dual Coil, High Capacity Can Tray, inDEX Tool, Custom Coil and Tray Configurations, Custom Colors, Custom Graphics, Kick Panel |

In order to bring you the best products possible, we continue to improve product design and performance and as such specifications are subject to change without notice. The manufacturer makes no warranties or representations of compliance with any local, state, national or international requirements for the operation of the equipment in any application for which it is capable of being used beyond the UL and NAMA approvals listed on the product. Any purchaser is required to make an independent analysis of the fitness and legality of the product's use before it is deployed and must continue to monitor the potential changing nature of compliance requirements. The manufacturer expressly disclaims responsibility for compliance with any laws and affirmatively requires any buyer to make an independent analysis of the fitness and legal basis of any use or application of the subject unit.



A Watters Group Company

U-Select-It
 8040 University Boulevard
 Des Moines, Iowa 50325
 1-800-247-8709
 Fax: 515-274-0390
 www.uselectit.com

